

# WBR50\_8

## Battery Test System



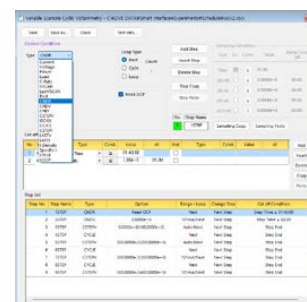
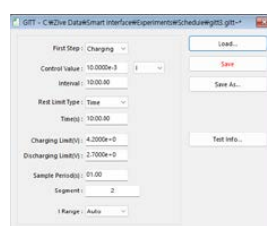
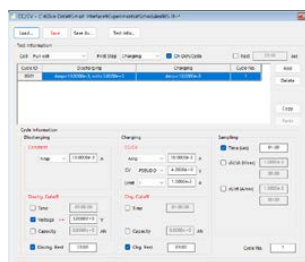
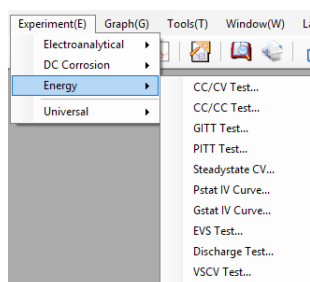
- For max -1V to 5V @ 5Amp power applications
- 4 current ranges
- Optional Temperature/Aux V measurement
- Potentiostat/Galvanostat circuit
- High accuracy
- Max 128 channels configuration
- 3U height compact design
- LAN communication

### Battery Charge/Discharge Test System for -1V to 5V @ 5Amp power application

The battery test system, **WBR50\_8**, is spin off 8 channel design from WBR50 rack system having capability of -1V to 5V @ 5Amp power.

The **WBR50\_8** is focusing to single cell battery test under max 5ampere. The voltage accuracy is  $\pm 0.02\%$  FSR, and the current accuracy on these channels is  $\pm 0.03\%$  FSR. Up to 8 independent channels can be installed per substation and extra channels can be added up to a maximum of 128 channels.

The **WBR50\_8** can do the following fixed techniques and user can make their own test procedure using schedule editor.



User can use advanced Smart Interface(SI) software or simple Battery Interface (BI) software with WBR50\_8. These software are convenient and powerful tool allowing:

- easily making schedule files by using schedule editor
- selecting pre-defined techniques
- classifying/grouping channels by user's purpose
- monitoring detailed test data
- providing general/cycle graph format
- converting the data to ASCII or excel format

The **WBR50\_8** can communicate with the computer by the way of a Local Area Network(LAN).

## ● Features

- Potentiostat/Galvanostat circuit : no time delay between the charge and discharge cycles.
- Supports techniques for battery studies such as CC/CV test, CC/CC test, CV test, as well as GITT/PITT test.
- The various safety functions are provided to protect the cell and system from being damaged.
- The obtained data can be analyzed by IVMAN™ software without a license code for further analysis.

## ● For Energy Test

- Charge/Discharge(CC/CV) Test
- Constant Current Charge/Discharge(CC/CC) Test
- Potentiostatic/Galvanostatic IV Curve Test
- Electrochemical Voltage Spectroscopy(EVS) Test
- Galvanostatic Intermittent Titration Technique(GITT) Test
- Potentiostatic Intermittent Titration Technique(PITT) Test
- Steady State Cyclic Voltammetry
- Electrochemical Voltage Spectroscopy Technique (EVS)
- Various Scan rate State Cyclic Voltammetry

## ● Options

- Battery Jigs
- Battery holders
- Rack
- Auxiliary voltage input/ Temperature input (K type TC)

## ● Specifications

Control voltage range	-1V to 5V
Control current range	5A, 500mA, 50mA, 5mA (4 ranges)
LED	Ch Run: 8ea, Power: 1ea, Ready: 1ea
Input impedance	10 <sup>12</sup> Ohm
Cell connection	4 probe type, alligator clip cables
Channel No.	8

### Voltage Control/Measurement

Voltage accuracy	±0.02% f.s.
Resolution(16 bits)	0.15mV

### Current Control/Measurement

Current accuracy	±0.03% f.s.
Resolution	16 bit(0.0015% f.s)

### Misc.

Max Channel No. per PC	128
Channel Option	Temperature input/ Aux V input
Communication	TCP/IP
Sampling time	Without option - 1~32 channels system: 10msec - 33~40 channels system: 20msec - 41~128 channels system: 50msec With option (Aux V and/or Temperature) - 1~16 channels system: 10msec - 17~40 channels system: 20msec - 41~128 channels system: 50msec
Size	W431.2xD570.5xH137.4mm

All specifications are subject to change without notice.



WonATech Co., Ltd.  
7 Neunganmal 1-gil, Seocho-gu,  
Seoul, 06801, Korea  
Tel: +82-2-578-6516 Fax: +82-2-576-2635  
e-mail: sales@wonatech.com  
website: www.wonatech.com

Local Distributor