

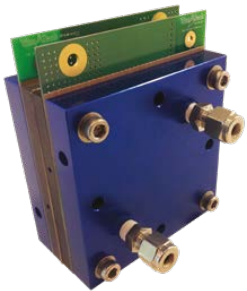
# Fuel cell hardware fixture

## Fuel Cell Hardware Fixture

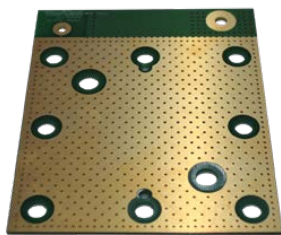
- For PEMFC, DMFC
- Max.operating temperature : 120°C or 180°C
- Active area : 5, 9, 25, 50, 100cm<sup>2</sup>
- Components : serpentine flow pattern, cartridge heater(2), current collector(2), cell graphite(2), end plate(2), connector
- Thermal Jacket is available as an option.
- MEA is not included.

### Ordering Guide

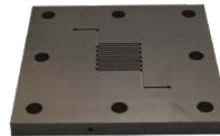
Active Area	Max. Temp.	Part No.
5cm <sup>2</sup>	120°C	SCFC5
9cm <sup>2</sup>	120°C	SCFC9
25cm <sup>2</sup>	120°C	SCFC25
50cm <sup>2</sup>	120°C	SCFC50
100cm <sup>2</sup>	120°C	SCFC100
5cm <sup>2</sup>	180°C	SCFC5H
9cm <sup>2</sup>	180°C	SCFC9H
25cm <sup>2</sup>	180°C	SCFC25H
50cm <sup>2</sup>	180°C	SCFC50H
100cm <sup>2</sup>	180°C	SCFC100H



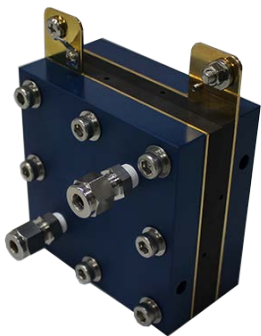
SCFC\*\*



Current Collector Plate



• single serpentine for SCFC5 & SCFC9



SCFC\*\*H



Current Collector Plate



• triple serpentine for SCFC25



WonATech Co., Ltd.  
 7, Neunganmal 1-gil, Seocho-gu,  
 Seoul, 06801, Korea  
 Phone: +82-2-578-6516  
 Fax: +82-576-2635  
 e-mail) sales@wonatech.com  
 website: www.wonatech.com

Local Distributor

